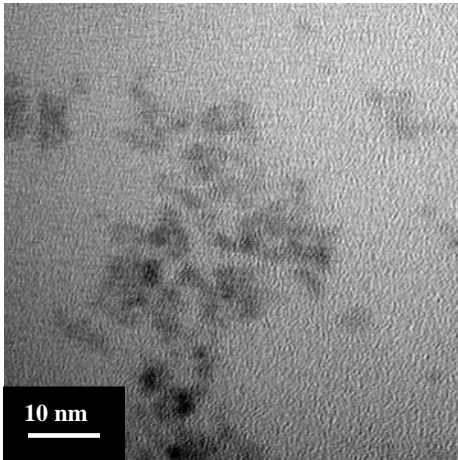


**Small crystallite size**

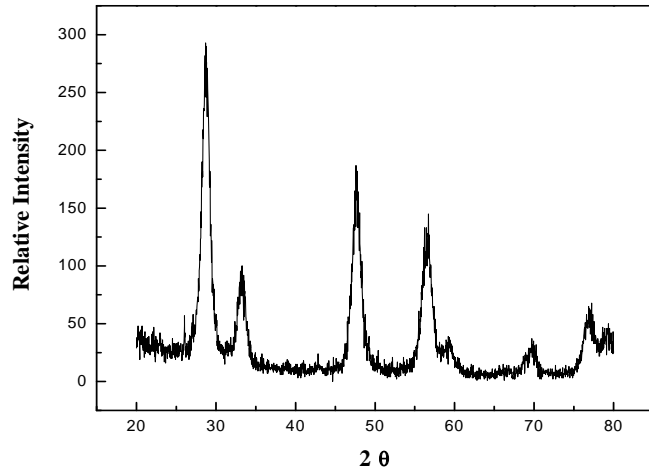
**Narrow size distribution**

**High surface area**

**Cerium (IV) OXIDE\***



TEM micrograph of CeO<sub>2</sub> powder showing small particle size and narrow distribution.



XRD pattern of CeO<sub>2</sub> powder showing broad peaks indicative of fine crystallite size.

**Typical Properties**

Crystal Phase .....	Fluorite (Cubic)
Avg. Crystallite Size (From XRD) .....	8 nm
Avg. Particle Size (From Surface Area).....	15 nm
Specific Surface Area .....	55 m <sup>2</sup> / g
Color .....	Yellow
True Density .....	7.215 g / cm <sup>3</sup>
Purity.....	99.5 %

**Typical Applications**

- Cosmetics such as sunscreens
- Anti-abrasion transparent coatings
- Catalyst support
- Polishing slurries

\* Cerium (IV) Oxide doped with oxides of Gd, Y and Sm are also available on request  
 Available in quantities of 100, 250 & 500 grams. Pricing information is available on our website.