

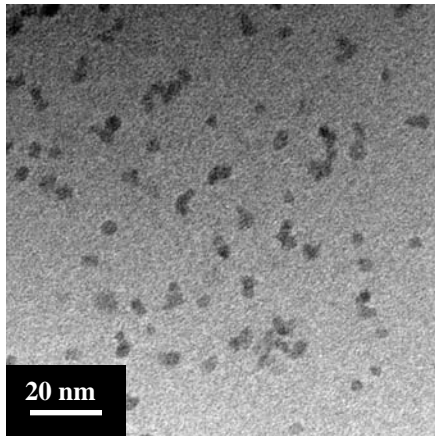


Small crystallite size

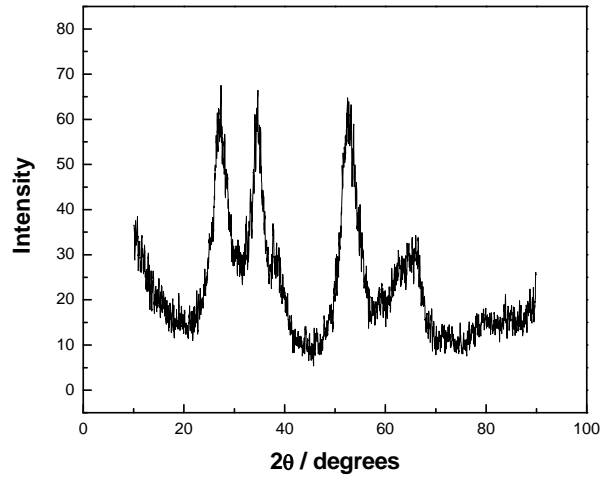
Narrow size distribution

High surface area

TIN (IV) OXIDE



TEM micrograph of SnO₂ nanopowder showing small particle size and narrow distribution.



XRD pattern of SnO₂ nanopowder showing broad peaks indicative of fine crystallite size.

Typical Properties

Crystal Phase	Cassiterite (Tetragonal)
Avg. Crystallite Size (From XRD)	4 nm
Avg. Particle Size (From Surface Area).....	5 nm
Specific Surface Area	180 m ² / g
Color	White
True Density	6.85 g / cm ³
Purity.....	99.9 %

Typical Applications

- Solid state gas sensors
- Optical Devices
- Transparent electrodes
- Rechargeable lithium ion batteries

Available in quantities of 100, 250, & 500 grams. Pricing information is available on our website.