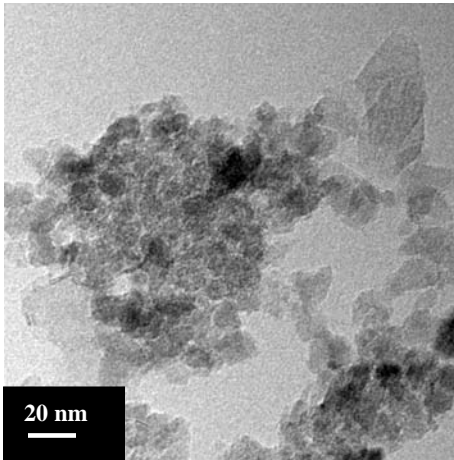


**Small crystallite size**

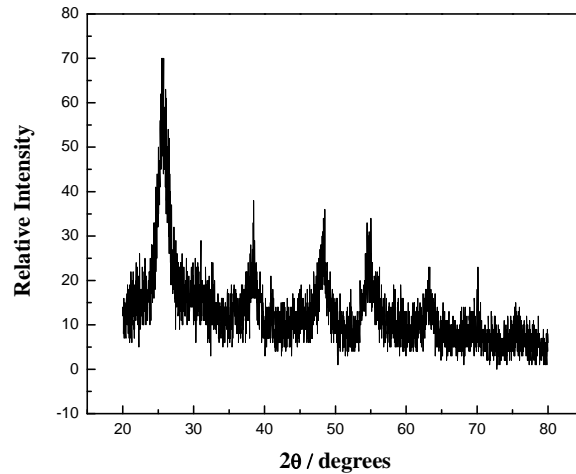
**Narrow size distribution**

**High surface area**

## Titanium (IV) OXIDE



TEM micrograph of TiO<sub>2</sub> powder showing small particle size and narrow distribution.



XRD pattern of TiO<sub>2</sub> powder showing broad peaks indicative of fine crystallite size.

### Typical Properties

Crystal Phase .....	Anatase (Tetragonal)
Avg. Crystallite Size (From XRD) .....	5 nm
Avg. Particle Size (From Surface Area).....	9 nm
Specific Surface Area .....	170 m <sup>2</sup> / g
Color .....	White
True Density .....	3.84 g / cm <sup>3</sup>
Purity.....	99.9 %

### Typical Applications

- Cosmetics such as sunscreens
- Photo-catalysts for environmental purification
- Catalyst support
- Nano-porous membranes for filtration

Available in quantities of 100, 250, & 500 grams. Pricing information is available on our website.